

# Specifications

## ENGINE

Model .....Isuzu CC-6BG1T  
 Type .....4-cycle water-cooled, direct injection  
 Aspiration .....Turbocharged, intercooled  
 No. of cylinders .....6  
 Rated power  
 ISO 9249 / SAE J1349 net .....168 HP(170 PS) at 2100 min<sup>-1</sup>(rpm)  
 Maximum torque .....637 Nm (65 kgfm) at 1800 min<sup>-1</sup>(rpm)  
 Piston displacement .....6.494 L  
 Bore and stroke .....105 mm x 125 mm  
 Batteries .....2 x 12 V / 88 Ah

## HYDRAULIC SYSTEM

**Hydraulic Pumps**  
 Main pumps .....2 variable displacement axial piston pumps  
 Maximum oil flow .....2 x 212 L/min  
 Pilot pump .....1 gear pump  
 Maximum oil flow .....33.6 L/min

**Relief Valve Settings**  
 Implement circuit .....350 kgf/cm<sup>2</sup> (34.3 Mpa)  
 Swing circuit .....310 kgf/cm<sup>2</sup> (30.4 Mpa)  
 Travel circuit .....350 kgf/cm<sup>2</sup> (34.3 Mpa)  
 Pilot circuit .....40 kgf/cm<sup>2</sup> (3.9 Mpa)  
 Power boost .....388 kgf/cm<sup>2</sup> (38.0 MPa)

## UPPER STRUCTURE

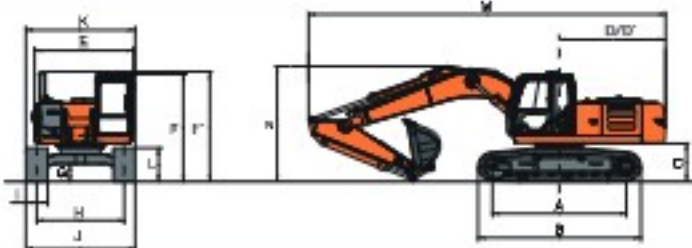
Swing speed .....12.2 min<sup>-1</sup>(rpm)  
 Swing torque .....65.1 kNm (6 638 kgfm)

## BACKHOE ATTACHMENTS

Capacity ISO Heaped (m <sup>3</sup> )	Width		Tooth Point (no's)	Weight kg	Max. Material Density (kg/m <sup>3</sup> )	Arm Length (m)
	Without side cutters	With side cutters				
0.9 GP	1130	1240	5	769	1800	2.9
1.0 HD	1245	1269	4	962	2000	2.4
1.1 GP	1330	1440	6	929	1800	2.4
1.22 ELM	1460	1570	6	857	1500	2.4
Block handling	1236	-	4	1240	G&M	2.4
1.7	1802	-	-	799	1150	2.4

G&M - Granite and Marble

## DIMENSIONS



	ZX220LC (STD/HD)
A Distance between tumblers	3 660
B Undercarriage length	4 460
*C Counterweight clearance	1 040
D Rear-end swing radius	2 910
D' Rear-end length	2 910
E Overall width of upperstructure	2 700
F Overall height of cab	2 940
F' Overall height of upperstructure	3 010
*G Min. ground clearance	450
H Track gauge	2 390
I Track shoe width	600
J Undercarriage width	2 990
K Overall width	2 990
*L Track height with triple grouser shoes	920
M Overall length	With 2.4 m arm 9 750 With 2.9 m arm 9 750
N Overall height of boom	With 2.4 m arm 3 030 With 2.9 m arm 3 070

Unit: mm \* Excluding track shoe lug G: Triple grouser shoe

## UNDER CARRIAGE

**Tracks**  
 Heat-treated connecting pins with dirt seals Hydraulic (grease) track adjusters with shock-absorbing recoil springs.

**Numbers of Rollers and Shoes on Each Side**  
 Upper roller .....2  
 Lower roller .....8  
 Track shoes .....49  
 Track guard .....2

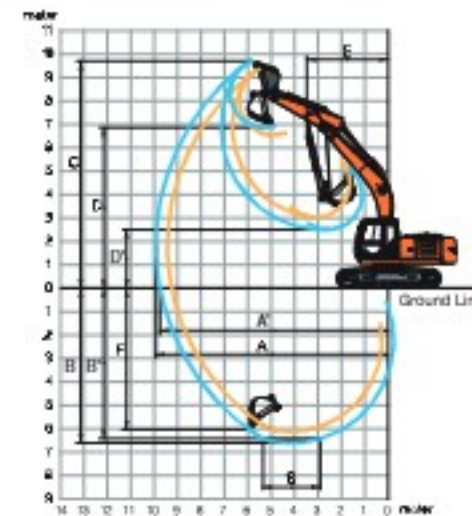
**Travel Device**  
 Each track driven by 2-speed axial piston motor.  
 Parking brake is spring-set/hydraulic-released disc type.  
 Automatic transmission system: High-Low.  
 Travel speeds .....High : 0 to 5.0 km/h  
 .....Low : 0 to 3.5 km/h

Maximum traction force .....184 kN (18 800 kgf)  
 Gradeability .....70% (35 degree) continuous

## SERVICE REFILL CAPACITIES

Fuel tank .....400.0 L  
 Engine coolant .....23.0 L  
 Engine oil .....25.0 L  
 Swing device .....6.2 L  
 Travel device (each side) .....6.8 L  
 Hydraulic system .....240.0 L  
 Hydraulic oil tank .....135.0 L

## WORKING RANGES



	Boom length	5.68 m	
	Arm length	2.4 m	2.9 m
A	Max. digging reach	9 435	9 930
A'	Max. digging reach (on ground)	9 260	9 760
B	Max. digging depth	6 160	6 630
B'	Max. digging depth for 2.5 m level	5 950	6 470
C	Max. cutting height	9 700	10 070
D	Max. dumping height	6 870	7 200
D'	Min. dumping height	3 180	2 630
E	Min. swing radius	3 180	3 190
F	Max. vertical wall digging depth	5 720	6 140

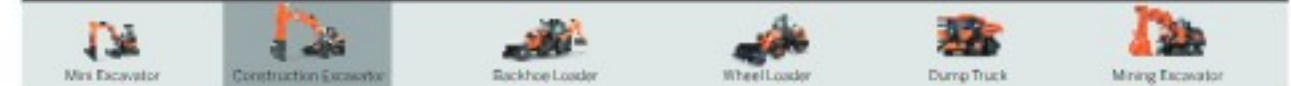
Unit: mm

## Tata Hitachi Construction Machinery Company Private Limited

Registered Office: Jubilee Building, 45 Museum Road, Bangalore, India 560025  
 Telephone: +9180 66953301 / 02 / 03 / 04 / 05 | Email: info@tatahitachi.co.in



### OUR RANGE OF PRODUCTS



Authorised Dealer

These specifications are subject to change without prior notice. The machine depicted may vary from the actual machine. Please contact our nearest office for latest specifications. Accessories shown here are not part of the standard equipment. Performance of the machine may vary with site and operating conditions encountered.



# TATA HITACHI

Reliable solutions

# ULTRA PERFORMANCE

**NEW**  
**ZAXIS220LC**  
**ULTRA**



Model Code : ZX220LC-5G | Engine Power : 168 HP @ 2100 rpm | Operating Weight : 21,700 kg | Bucket Capacity : ISO Heaped: 0.9-1.7 m<sup>3</sup>

# ULTRA PERFORMANCE

## Unmatched Performance

- Regeneration Circuits
- Enhanced Power Boost
- Best-in-class Swing Speed
- Auto Power Lift Mode
- High Production with Low Fuel Consumption
- Faster Cycle Time
- Swift Front Attachment Movements



## Limitless Reliability and Durability

- Reliable Japanese Engine
- Robust Structures
- Strengthened Undercarriage
- Reliable Pump and Motors
- Proven Upper Structure
- Reinforced Front Attachments
- Durable Components



## Top-Notch Technology and Versatility

- HIOS III Hydraulic System
- New-age Micro-Processor Based Controls
- ConSite Telematics Suite
- Global e-Service
- Factory fitted rock breaker piping kit
- Easily customizable with attachments, such as, rock breaker, auger, orange peel grab, quick coupler, etc.



## Redefined Comfort and Safety

- Well Ventilated and Spacious Cabin
- Auto control Air Conditioner
- Ergonomically Placed Controls
- Suspension Seat
- AM/FM, Bluetooth Music System with Powerful Speakers

### Safety:

- OPG Cabin
- Powerful LED lights



## Assured Support

- Extended Warranty
- Wide-spread Dealer Network
- Field Diagnostic Vehicle
- Mobile Workshop

